



21 m Working height

16,40 m Working radius with 250 kg

Continuous rotation

Flexible boom with basket arm

Rudi21

Alu-Power by **Klaas**

The Rudi21 is a powerful elevation work platform that is extremely flexible due to its additional basket arm and can thus be used for countless roof and façade works. The 3.5-tonne platform shows its full strength especially when it comes to difficult-to-access locations such as the backs of buildings or sloping roofs, as well as when space is at a premium.

Thanks to simple handling and sophisticated technology, the Rudi21 is quick and easy to set up. The user-friendly basket control stand is intuitively easy to operate, its joysticks work extremely sensitively and enable precise control. With a maximum basket capacity of 250 kg, the Rudi21 reaches a working height of 21 metres, its range to the side is 13 metres. These values are achieved through the perfect interaction of the lightweight aluminium boom and the patented Klaas winch technology installed in it.

Mounted on a robust Iveco Daily, the Rudi21 complies with the Euro6 emissions standard and can therefore also be used in innercity areas without hesitation.



Basket control station

- High-quality basket control station in terms of ergonomics and feel, optimally adapted to the operator's needs
- Easy to operate thanks to direct selection of important functions and clear presentation
- Extremely sensitive joysticks for precise control of the platform
- Informative, large colour display with clear visualisation of all important operating states of the platform
- With integrated plastic protective cover

Klaas boom system

- The boom can be rotated endlessly.
- Extremely strong special aluminium alloy with low net weight.
- No loss of strength in the weld seam due to friction stir welding process (RRS).
- Patented Klaas rope technology enables smooth, safe telescoping under load.
- Extremely low-maintenance and durable rope technology
- Completely enclosed boom so that no objects such as twigs etc. can get into the inside of the mast

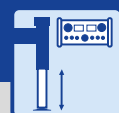
Working platform

- Flexibility of the boom simplifies work in difficult to access locations such as the rear of buildings or sloping roofs.
- Convenient access via self-closing swing door, as well as the possibility to step over at the front of the basket
- The work basket can be rotated steplessly by up to 180° via a joystick.
- 230 V socket and standard-compliant anchorage points for PPE



Support system

- Fully hydraulic V-outriggers in conjunction with ASC support monitoring enables infinitely variable support widths, also in the direction of the outreach.
- Axle clearance detection ensures optimum outreach values.
- Optimum user protection thanks to permanent monitoring of stability and indication via the display of the cage control panel.
- Integration of the hydraulic lines in the outrigger beams, thus protection against damage by falling objects.
- City support for space-saving setup



Automatic levelling

- Simplified assembly and disassembly of the working platform completely via the control panel
- Stepless lateral extension of the support beams
- Stepless height levelling of the support cylinders ensures optimum levelling and alignment even on uneven terrain.
- The current stability (ground pressure) of the individual supports is shown graphically on the control panel display.



Platform control

- State-of-the-art safety PLC for stage operation according to DIN EN 280
- CAN-BUS control block enables particularly sensitive and precise work.
- Soft start-stop, levelling cylinder and luffing cylinder ensure low-vibration operation.
- All essential basket functions can be optionally controlled from below via a second cable remote control.
- Freely selectable presetting of rotation angle, projection and height to avoid danger zones.



Drive concept

- Stage operation via powerful truck engine with power take-off (PTO).
- Thanks to modern controllers and associated electrical components, a standstill in the assembled state is possible for a longer period of time, so that the engine can be restarted without any problems.
- Electronic fuel level monitoring via the control console



Telescopic winch

- The rope technology familiar from fire brigade ladders enables rapid telescoping under load.
- The low net weight of the ropes benefits the outreach and load capacity.
- The rope technology is low-maintenance and easily accessible.
- Maximum safety thanks to double rope guide



Full panelling

- Completely closed full panelling made of anodised aluminium smooth plate ensures a clean and high-quality overall appearance.
- Doors and bonnets ensure accessibility to various components.

Euro6-Norm

- Modern carrier vehicle meets the Euro 6 emissions standard
- No restrictions in inner cities

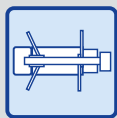


Rudi 21

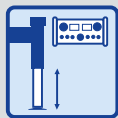
Equipment



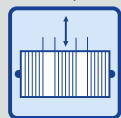
Klaas boom system



V-Outriggers



Automatic levelling



Telescopic winch



Energy supply



Working platform



Platform control



Drive concept



Full panelling



Basket control station



Continuous rotation



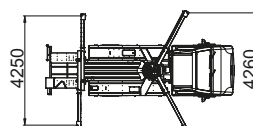
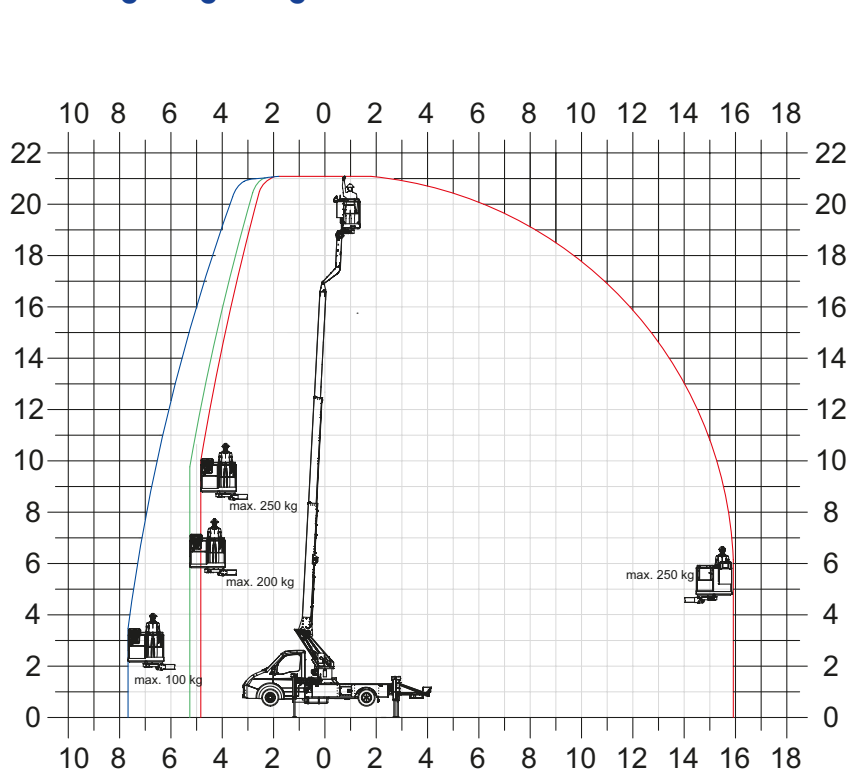
Remote control from below

Technical specifications

Working height	21.00 m
Range to the rear (250 kg)	16.40 m
Range to the side (250 kg)	12.80 m
Swivel range	continuous rotation
Work basket angle of rotation	max. 180°
Basket capacity	250 kg
Large work basket	1,4 m x 0,7 m
Outrigger width (min.) front and back	2,20 m
Outrigger width (max.) at the front	4,50 m
Outrigger width (max.) at the back	4,25 m
Total weight* (min.)	3,5 t
Clearance height	3.00 m

*depending on truck type

Working Range Diagram*




Klaas

KLAAS Service- & Vertriebs GmbH

Haselburger Damm 25 · D-59387 Ascheberg

Tel.: +49 (0) 2593 - 95 92 - 0

info@klaas.com

klaas.com

Subject to technical changes. All specifications are approximate. Changes to the functions and services are reserved. The information reflects the device performance at the time of printing.