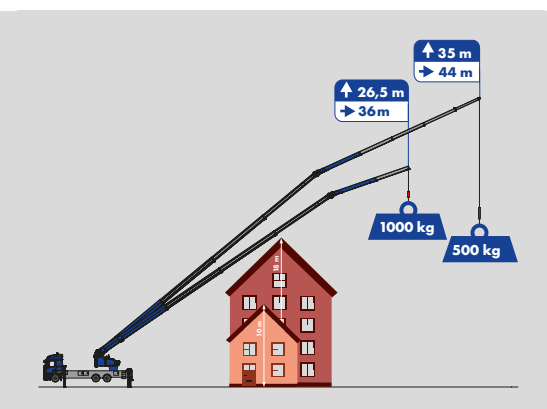


K2500



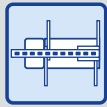
Hook Height **58 m** / Boom length **59 m**
 Max. capacity **9.000 kg**
 3-fold hydraulic, telescopisch fly jib



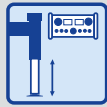
Equipment



Klaas Boom system



H-Outriggers



Automatic levelling



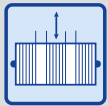
Hydraulic, telescopic fly jib



Twin luffing cylinders



Double derricking cylinders



Telescopic winch



Continuous rotation



Crane control system



XL Radio remote control



Hybrid drive



Full panelling



Personal safety mode



Working platform (opt.)



Accessory fix system (opt.)



Mounting-/glass hook (opt.)

Technical specifications

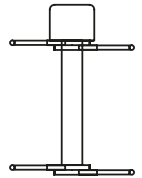
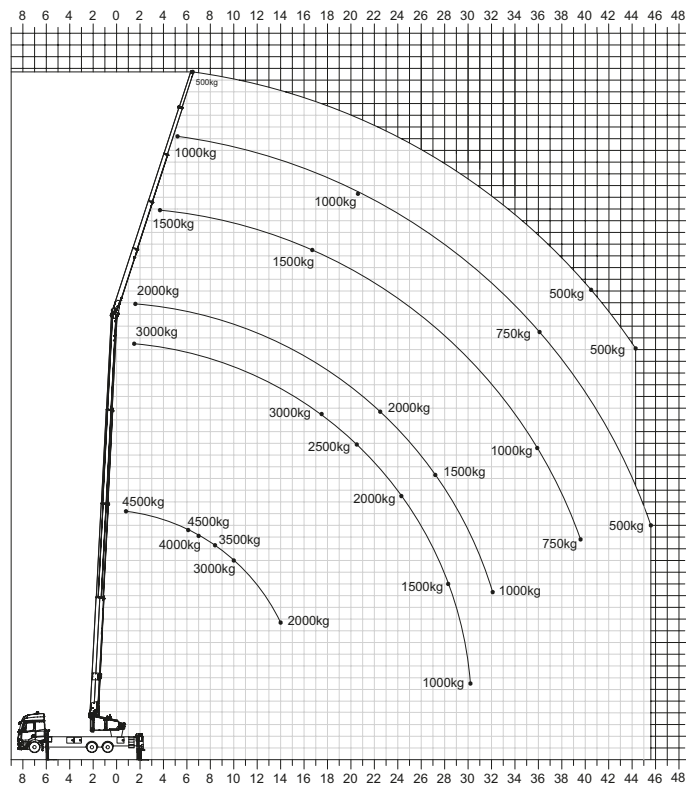
Hook load (stand./opt.)	4.5/9.0 t
Hook height	58.00 m
Boom length	59.00 m
Outrigger width (min.)	3.04 m
Outrigger width (max.)	7.34 m
Winch capacity	4,500 kg
Fly jib	
Range (3.000 kg - 1.000 kg)	6.86 - 17.50 m
Range (750 kg - 500 kg)	17.50 - 18.75 m
Extension 4, manual (500 kg)	21.77 m
Truck * Total weight (min.)	≥ 26.00 t

* depending on truck type

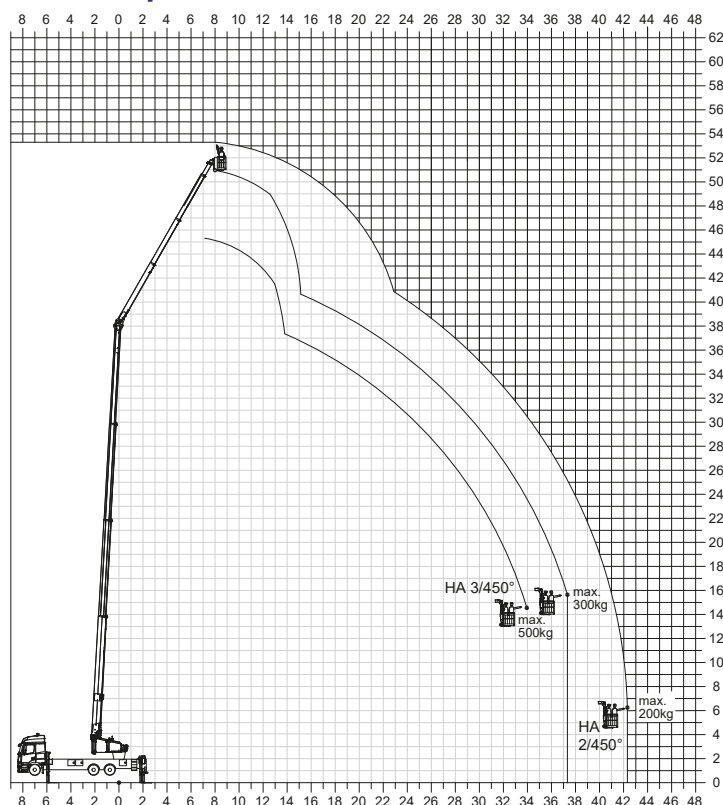
Working range*

Load	Working range	Height
4,500 kg**	6.00 m	19.50 m
3,500 kg**	8.20 m	18.00 m
3,000 kg	17.50 m	29.50 m
2,500 kg	20.50 m	27.00 m
2,000 kg	22.50 m	29.80 m
1,000 kg	36.00 m	26.50 m
500 kg	45.50 m	20.00 m

Working range diagram*



Platform operation*



Subject to technical changes. All specifications are approximate and depending on truck type. Changes to the functions and services are reserved. The information reflects the device performance at the time of printing.

*Ausladungswerte variieren, je nach Trägerfahrzeug

**bei eingefahrenem Grundmast