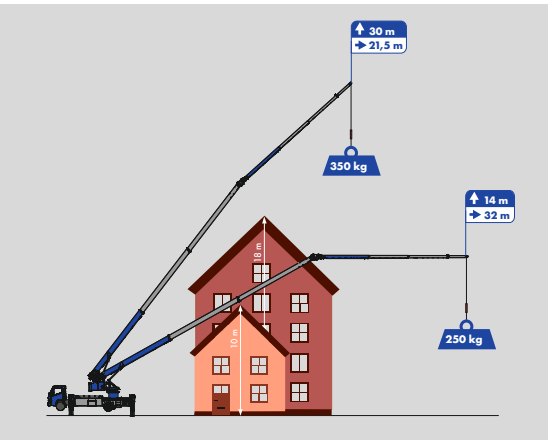


# K760



Hook height **37,5 m**, Boom length **39 m**

**32 m** Working range with **250 kg**

Double hydraulic telescopic fly jib

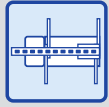
New high strength fiber rope



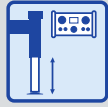
**Equipment**



Klaas Boom system



H-Outriggers



Automatic levelling



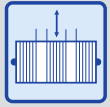
Hydraulic, telescopic fly jib



Twin luffing cylinders



Double derricking cylinders



Telescopic winch



360° continuous rotation



Crane control system



Radio remote control



separate diesel engine



Full panelling



FPM Personal safety mode



Hybrid drive (opt.)



Working platform (opt.)



Accessory fix system (opt.)



Mounting-/glass hook (opt.)

**Technical specifications**

Hook load (stand./opt.)	2.0/4.0 t
Hook height	37.50 m
Boom length	39.00 m
Outrigger width (min.)	3.03 m
Outrigger width (max.)	5.29 m
Winch capacity	2,000 kg
Boom (2,000 kg - 500 kg)	5.00 - 11.65 m
Extension 3 (350 kg)	13.65 m
Truck * Total weight (min.)	≥ 7.49 t

\* dependent on truck type

**Working range**

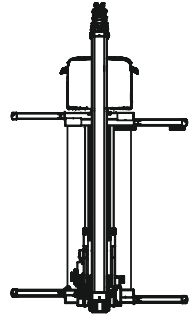
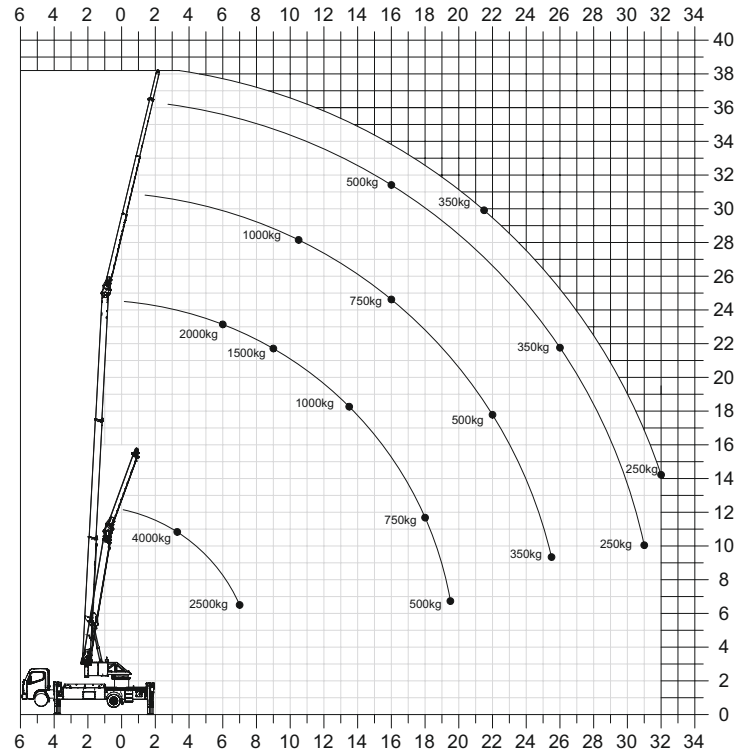
Load	Working range	Height
2,000 kg	6.00 m	23.00 m
1,000 kg	13.50 m	18.00 m
500 kg	22.00 m	18.00 m
250 kg	32.00 m	14.00 m

**Working range 4 t Capacity\***

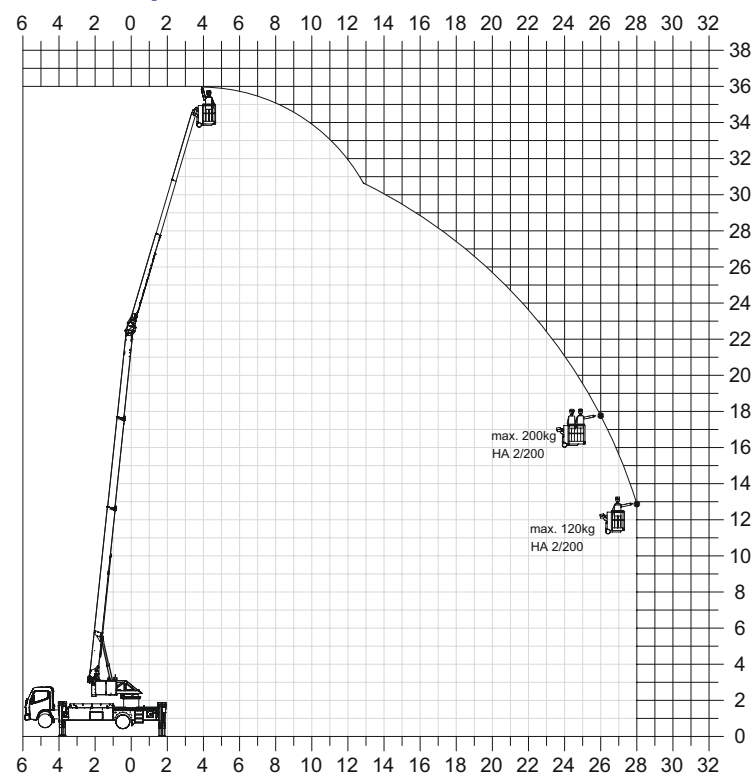
Load	Working range	Height
4,000 kg	3.50 m	11.00 m
2,500 kg	7.00 m	6.50 m

\*with 2-fall

**Working range diagram\***



**Platform operation\***



\*Working range vary, depending on truck type.

Subject to technical changes. All specifications are approximate and depending on truck type. Changes to the functions and services are reserved. The information reflects the device performance at the time of printing.