



20 m Working height  
Water capacity 400 litres/min.  
Water throwing distance 30 m



The Theo20 FW is an aerial work platform for fast and safe fire fighting operations in confined spaces. Via a telescopic water guide tube on the aluminium mast, fires with a water capacity of 400 litres per minute and a throwing range of approximately 30 metres can be fought efficiently. The Theo20 FW

reaches a working height of 20 metres. Its maximum range to the side is 14.5 metres with a basket load of 100 kg, and it can even reach 250 kg at the rear. The work basket with a load capacity of 250 kg impresses with high stability and a user-friendly basket operating station. Thanks to its compact dimensions, the Theo20 FW is easy to handle and can also be set up in places where access is difficult or impossible for proven fire-fighting vehicles (e.g. historical buildings). This makes it an ideal addition to existing aerial rescue

vehicles within the fire brigade. As the vehicle can be equipped with a switchable blue-orange identification lighting, a combined use of fire brigade and building yard is also possible without any problems.



### Work basket

- A jet pipe can be attached directly via a C connection on the front of the basket. It is also possible to extinguish from the basket via a short C hose.
- Entrance and exit to the front and rear via a self-closing door
- The work basket can be turned continuously by 90° using a joystick.
- Integration of a 230 V socket for chain saw & Co.
- Standardised attachment points for PPE directly in the working platform
- Powerful LED spotlights and near-field lamps for effective illumination of the scene



### Klaas boom system

- The boom is endlessly rotatable.
- Telescopic water supply pipe supplies the work basket with fire water.
- Extremely strong aluminium special alloy with low dead weight
- No loss of strength in the weld seam through friction stir welding (RRS)
- Patented Klaas rope technology enables smooth, safe telescoping under load.



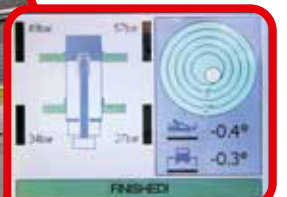
### Basket control station

- High-quality, ergonomic basket control panel
- Simple operation thanks to direct selection of important functions and clear display
- Extremely sensitive joysticks for precise stage control
- Informative, large colour display with clear visualisation of all essential operating states
- With integrated plastic protective cover



### Support system

- Fully hydraulic V-support allows infinitely variable support widths
- ASC control permanently monitors the support pressure and guarantees high stability. This is permanently reported back to the basket operator.
- No restrictions on installation due to specified grid
- Integration of the hydraulic lines in the support beams, thus protection against damage from falling objects



### Automatic levelling

- Automatic retraction and extension of the support and extension cylinders via the basket operating console
- Stepless height adjustment of the support cylinders ensures optimum levelling even on uneven terrain.
- Graphic display of the ground pressure of the individual support cylinders via the large colour display of the basket operating stand
- Simplified and fast operation through automatic erection of the boom and its return to the transport position

### Boom/basket control

- State-of-the-art safety PLC for stage operation according to DIN EN 280
- CAN-BUS control block enables particularly sensitive and precise work.
- Smooth start-stop, levelling and luffing cylinders ensure low-vibration operation.
- All essential basket functions can optionally be controlled from below via a second, wired remote control.
- Hazard zones can be bypassed, as the angle of rotation, range and height can be individually adjusted.

### Drive concept

- Stage operation via powerful truck engine with auxiliary drive (PTO)
- Modern controllers and electrical components enable a longer standstill in assembled condition.
- Electronic tank monitoring via the control panel

### Rope technology

- The proven jib rope technology used in turntable ladders enables a quick and easy telescoping under load.
- Low maintenance and easily accessible rope technology
- High safety due to redundant rope guidance and permanent electronic monitoring of the rope conditions

### Podium



- Well thought-out podium of the company Heinz Meyer Feuerwehrbedarf for the safe storage of the necessary fire fighting equipment
- Lockable, dust-tight and splash-proof doors and bonnets ensure quick access to the loading.
- Bright equipment compartment lighting when the storage compartment is open and a lock monitoring system make work easier.

### Vehicle

- Interior offers space for three emergency services.
- Clearly arranged devices such as radio, navigation and control panel for special signals facilitate emergency driving.
- The image from the rear view camera is displayed on the large navigation screen as required.
- Modern carrier vehicle meets the exhaust emission values of the current Euro 6 standard.



# Feuerwehr Theo20

## Technical Specifications

### Platform operation:

max. working height: 20 m  
max. range of action with 250 kg: 14.5 m  
Pivot angle: 360° endless  
Basket rotation angle: ± 45°

### Extinguishing mode:

max. water capacity: 400 l/min

### Power supply:

230 V Schuko socket in basket

### Light mast operation:

Headlights: 2 x LED 24 V/45 W  
Basket lighting: various 24 V LED lamps  
Boom and periphery lighting: 24 V LED lamps

### Chassis:

Iveco 45C180, 1 + 2 seats  
Vehicle dimensions (L x W x H): 8.3m x 2.05 m x 3.15 m  
Total weight: 4.6 t

### Podium structure:

Stainless steel base frame with aluminium sheeting, lockable equipment compartments, illuminated and protected against dust and splash water, generous ambient lighting

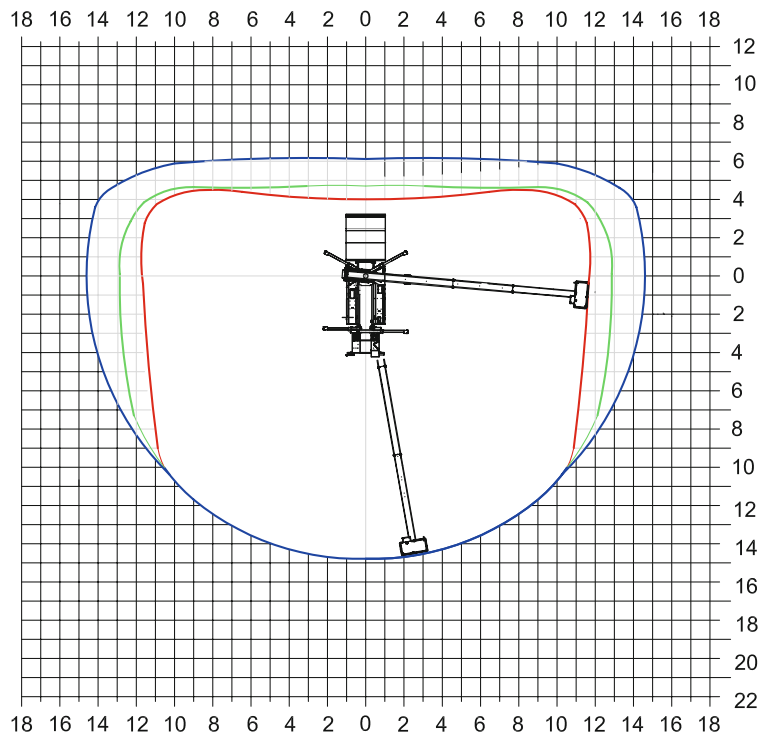
### Equipment space loading:

Individual according to customer requirements

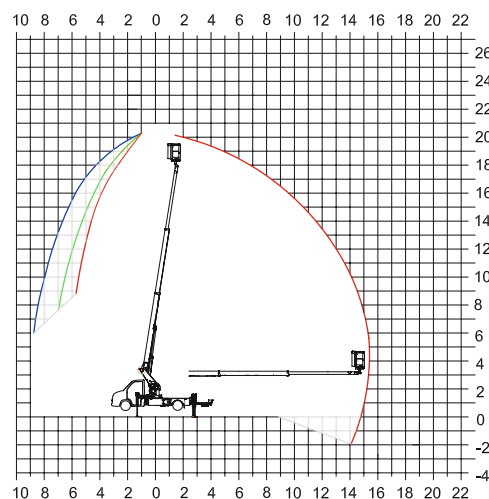
## Our service: fast, customer-oriented and flexible

You can count on our service even after you have taken over your machine. In order to keep the distance to us as short as possible, we have established a nationwide network of Klaas service stations. This enables us to help you quickly and unbureaucratically in case of problems. Of course, Klaas Service will also come to you for maintenance or minor repairs. In addition, we sell our equipment worldwide through independent sales partners.

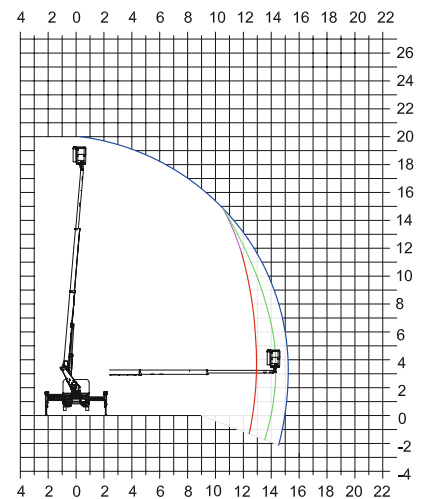
## Working Range Diagram



Range to the rear



Range to the side



### KLAAS Alu-Kranbau GmbH

Raiffeisenstraße 24 · D - 59387 Ascheberg

Tel.: +49 (0)2593 - 95 92 - 0

Fax: +49 (0)2593 - 95 92 - 25

info@klaas.com